



Certificate of Analysis

CANNABUSINESS LABORATORIES, LLC

Customer:

South Point Hemp
50 Hi Line Dr
Union, MO 63084

Sample ID **250128018**

Order Number **CB250128006**

Sample Name **MntPM0D82501**

External Sample ID

Batch Number

Product Type **Edible**

Sample Type **Edible**

Received Date **1/31/2025**

COA Released **2/3/2025**

Comments

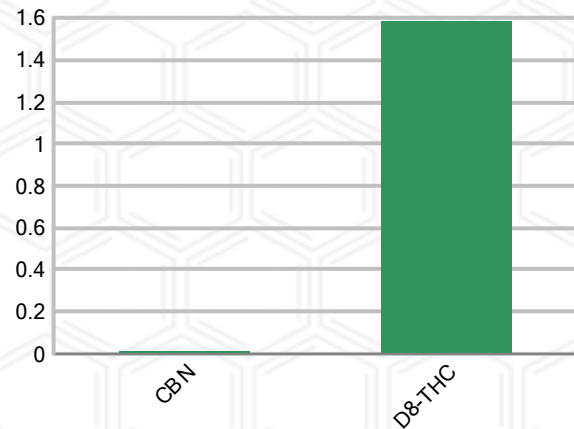
CANNABINOID PROFILE (Product Size = 1.23 g)

Analyte	LOQ (%)	% Weight	mg/g	mg/serving
CBC	0.01	ND	ND	ND
CBD	0.01	ND	ND	ND
CBDa	0.01	ND	ND	ND
CBDV	0.01	ND	ND	ND
CBG	0.01	ND	ND	ND
CBGa	0.01	ND	ND	ND
CBN	0.01	0.011	0.108	0.13
d8-THC	0.01	1.582	15.82	19.46
d9-THC	0.01	ND	ND	ND
THCa	0.01	ND	ND	ND
Total Cannabinoids		1.593	15.93	19.59
Total Potential THC		N/A	N/A	ND
Total Potential CBD		N/A	N/A	ND
Total Potential CBG		N/A	N/A	ND
Ratio of Total Potential CBD to Total Potential THC				N/A
Ratio of Total Potential CBG to Total Potential THC				N/A

SAMPLE IMAGE



CANNABINOIDS % Weight



*Total Cannabinoids refers to the sum of all cannabinoids detected.

*Total Potential CBD = (0.877 x CBDa) + CBD. *Total Potential THC = (0.877 x THCa) + THC. *Total Potential CBG = (0.877 x CBGa) + CBG.

*Total Potential THC/CBD are calculated to take into account the loss of an acid group during decarboxylation.



J. Hobgood
Laboratory Manager

SIGNATURE

Jamie Hobgood

LABORATORY MANAGER

02/03/2025 1:18 PM

DATE

This product has been tested by CannaBusiness Laboratories using validated testing methodologies and a quality system. Values reported relate only to the product tested. CannaBusiness Laboratories makes no claims as to the efficacy, safety, or other risks associated with any detected or non-detected levels of any compounds reported herein. This Certificate shall not be reproduced except in full, without the written permission of CannaBusiness Laboratories. Photo is of sample received by the lab and may vary from final packaging. The results apply to the sample as received.





Certificate of Analysis

CANNABUSINESS LABORATORIES, LLC

Customer

South Point Hemp
50 Hi Line Dr
Union, MO 63084



Sample Name: MntPM0D82501

Sample ID: 250128018

Order Number: CB250128006

Product Type: Edible

Sample Type: Edible

Received Date: 01/31/2025

Batch Number:

COA released: 02/03/2025 1:18 PM

Potency (mg/g)			
Date Tested: 01/31/2025		Method: CB-SOP-028	
Instrument:			
0.000 %	0.000 %	1.593 %	15.93 mg/g
Total THC	Total CBD	Total Cannabinoids	Total Cannabinoids

Analyte	Result	Units	LOQ	Result	Units
CBC (Cannabichromene)	ND	%	0.010	ND	mg/g
CBD (Cannabidiol)	ND	%	0.010	ND	mg/g
CBDa (Cannabidiolic Acid)	ND	%	0.010	ND	mg/g
CBDV (Cannabidivarin)	ND	%	0.010	ND	mg/g
CBG (Cannabigerol)	ND	%	0.010	ND	mg/g
CBGa (Cannabigerolic Acid)	ND	%	0.010	ND	mg/g
CBN (Cannabinol)	0.011	%	0.010	0.108	mg/g
D8-THC (D8-Tetrahydrocannabinol)	1.582	%	0.010	15.82	mg/g
D9-THC (D9-Tetrahydrocannabinol)	ND	%	0.010	ND	mg/g
THCa (Tetrahydrocannabinolic Acid)	ND	%	0.010	ND	mg/g



J. Hobgood
Laboratory Manager

Jamie Hobgood

02/03/2025 1:18 PM

SIGNATURE

DATE

NT = Not tested, ND = Not detected; LOQ = Limit of Quantitation; <LOQ = Detected; >ULOL = Above upper limit of linearity; CFU/g = Colony forming units per 1 gram; TNTC = Too numerous to count

This product has been tested by CannaBusiness Laboratories using validated testing methodologies and a quality system. Values reported relate only to the product tested. CannaBusiness Laboratories makes no claims as to the efficacy, safety, or other risks associated with any detected or non-detected levels of any compounds reported herein. This Certificate shall not be reproduced except in full, without the written permission of CannaBusiness Laboratories. Photo is of sample received by the lab and may vary from final packaging. The results apply to the sample as received.